



Entrance sign before community visioning (2004)



Entrance sign proposed by the visioning design team

Volga, Iowa, is located along the River Bluffs Scenic Byway in Clayton County, participated in the Community Visioning Program in 2004. The gateway entrance into the community was a major priority for the visioning community. Through local fund-raising and volunteer labor, Volga was able to finish this project.



Volunteers constructing the sign



Completed sign (2006)

Community Entrance

Volga, Iowa



Agri-symbol Park and community entrance sign in 2004



Entrance sign proposed by the visioning design team

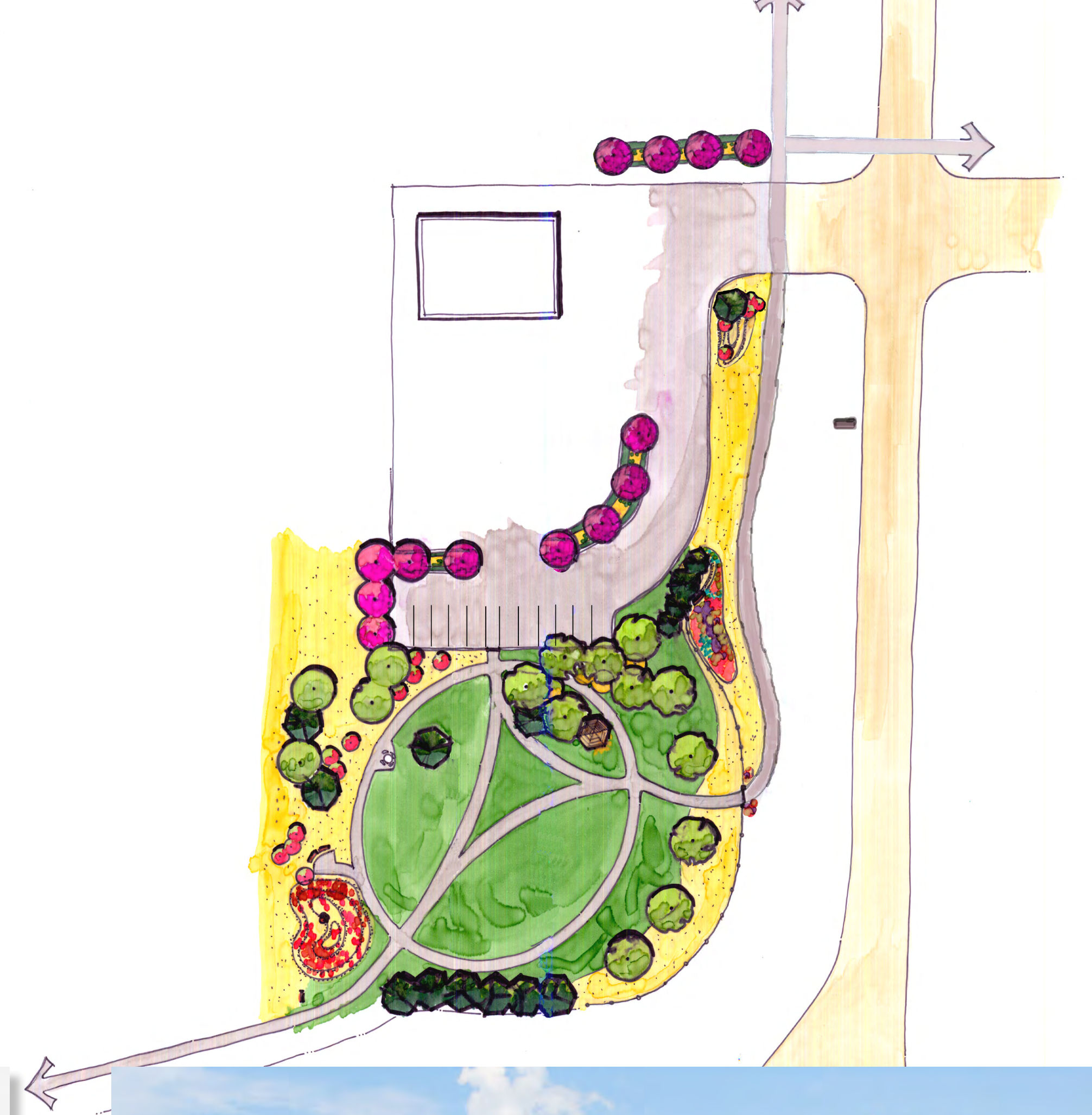
A visioning community in 2004, Shelby, Iowa, is located just north of Interstate 80 in western Iowa. The interstate interchange is the primary gateway to the community. The visioning committee decided to improve its first impression on visitors by making changes to Agri-symbol Park, which is visible from the interstate and is also a trailhead.



Agri-symbol Park after completion of project (2007)



Community entrance sign with additional landscaping (2007)



Community Entrance

Shelby, Iowa



Boyson Road corridor into Hiawatha in 2002



Entrance sign proposed by the visioning design team



Completed Boyson Street corridor entrance sign (2006)

Located next to Cedar Rapids, Hiawatha is a mostly land-locked community, bordering Cedar Rapids on its west, south and east sides and the city of Robins on its north side. As a result, it is sometimes difficult to determine where one town ends and another begins. To address this issue, the Hiawatha visioning committee decided to distinguish itself from the surrounding communities and to clearly identify the community gateway.

Community Entrance

Hiawatha, Iowa

Nora Springs is one of several communities in Floyd County that have participated in community visioning. The entrance sign designed during the visioning process and later installed incorporates the arches of the old U.S. Highway 18 bridge.

The images below show the development of the site since 2005, when the area was first seeded.



Highway 122 west entrance into Nora Springs (2002)



Entrance sign proposed by the visioning design team



Entrance sign in 2005



Entrance sign in 2006



Entrance sign in 2007



Entrance sign in 2009

Community Entrance

Nora Springs, Iowa