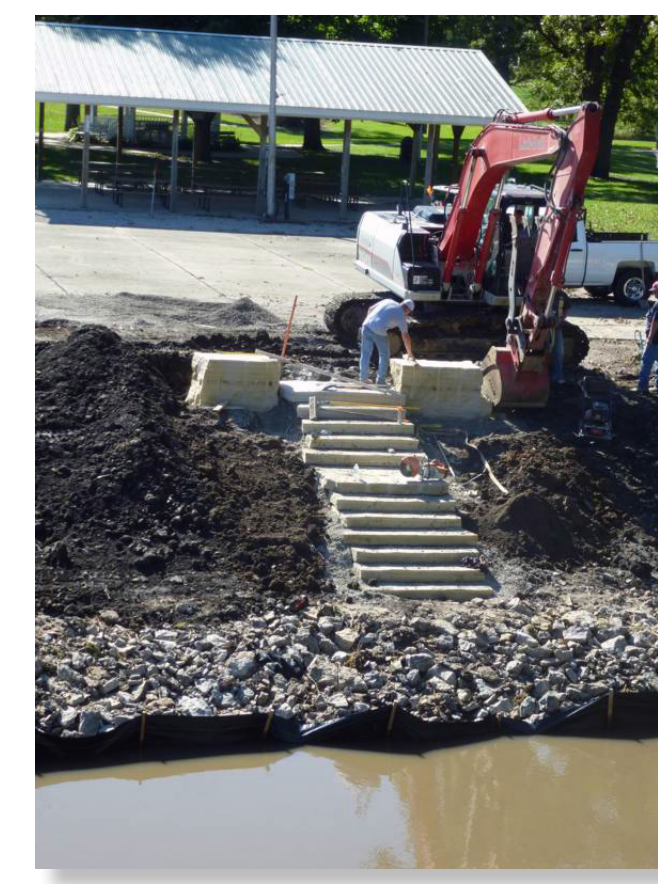




Streambank along Bear Creek in 2012



Completed streambank reconstruction, October 2014

Bear Creek is a prominent feature through the center of Shellsburg. During the Community Visioning process in 2012, the Shellsburg design team proposed strategies for stabilizing the streambank while improving the natural beauty of the creek.

With the help of volunteer labor, a Rockwell Collins "Green Communities" grant, and funds from both the City of Shellsburg and the Shellsburg Area Community Group, the Shellsburg visioning committee was able to complete the project within two years of participating in the Community Visioning Program.

# Streambank Restoration

## Shellsburg, Iowa